

Quick Installation Guide

Wall Plate Access Point



Scan for
EAP Start Guide

Note: EAP775-Wall is used as an example throughout the guide. Images may differ from your actual product.

©2025 TP-Link 7100002261 REV1.0.1

Package Contents

EAP with Paintable Cover

1×

1×

1×

1×

OR

2×

2×

2×

2×

2×

1×

Notes:

1. Accessories may vary by region and model.

2. If you want to paint the cover, remove it from the EAP body before painting.

3. To ensure product safety, please use the product with the cover installed.

Cover

Body

Installation

Note: This equipment shall be installed at a height of less than 2 meters.

Option 1

Option 2

Option 3

Option 1

Note: To ensure product safety, please use the product with the cover installed.

1

Choose the accessory screws that fit your junction box.

Compatible wall junctions:

Single Gang US

Dual Gang US

Octagon

86 mm

Standard EU

Note: For simplicity, this guide uses a Single Gang US wall junction box for demonstration.

2

≤40 mm

40–43.6 mm

Φ≤6.5 mm

3

4

Note: Reinforced or irregularly-designed network cables may not support this cable routing option.

Option 2

Note: To ensure product safety, please use the product with the cover installed.

1

2× Φ 7.6 mm (19/64 in)

1× Φ 25 mm (63/64 in)

2

≤40 mm

40–43.6 mm

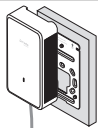
Φ≤6.5 mm

3

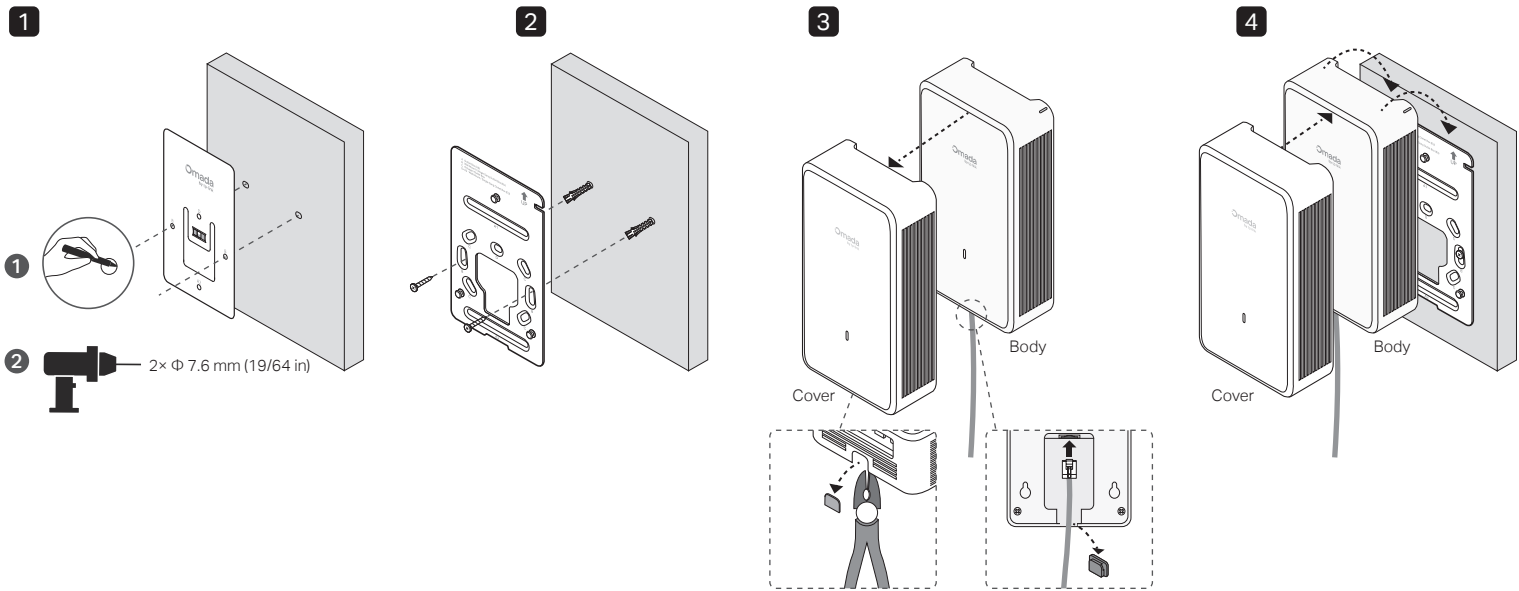
4

Note: Reinforced or irregularly-designed network cables may not support this cable routing option.

Option 3



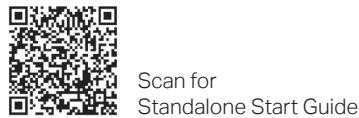
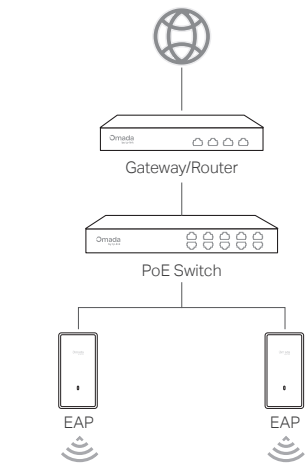
Note: To ensure product safety, please use the product with the cover installed.



Configuration

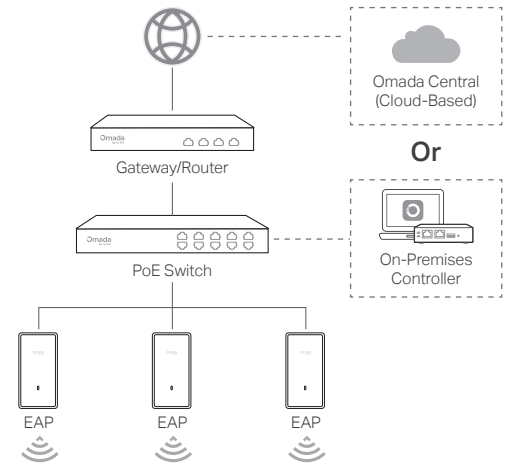
Option 1: Standalone Mode

Configure and manage each EAP on its standalone page.



Option 2: Controller Mode

Configure and manage EAPs (and other Omada devices) centrally with an Omada Controller.



Omada App

With the TP-Link Omada app, you can access and manage your Omada devices at a local site or remotely with a tap of your phone.

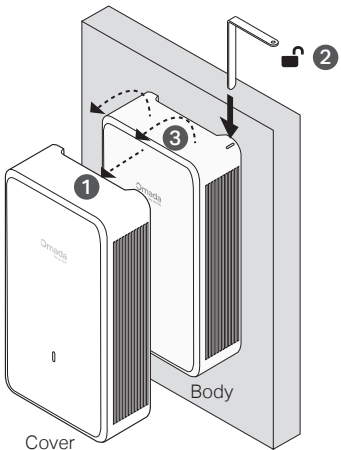


More Configurations

For more configurations, refer to the User Guides of the Omada Controller and Omada Access Points at: <https://support.omadanetworks.com/document/>

Appendix

The EAP will be locked after installed. To uninstall, remove the cover and unlock with the provided L-Key.



Safety Information

- Keep the device away from water, fire, humidity or hot environments.
- Do not attempt to disassemble, repair, or modify the device. If you need service, please contact us.
- Do not use the device where wireless devices are not allowed.
- This device can be powered only by equipments that comply with Power Source Class 2 (PS2) or Limited Power Source (LPS) defined in the standard of IEC 62368-1.
- The PoE ports shall not be used to charge lithium batteries or devices supplied by lithium batteries.

TP-Link hereby declares that the Access Point is in compliance with the essential requirements and other relevant provisions of directives 2014/53/EU, 2011 /65/EU and (EU) 2015/863.

The original EU Declaration of Conformity may be found at <https://www.tp-link.com/en/support/ce/>

TP-Link hereby declares that the Access Point is in compliance with the essential requirements and other relevant provisions of the Radio Equipment Regulations 2017.

The original UK Declaration of Conformity may be found at <https://www.tp-link.com/support/ukca/>

More Resources

Main Site
https://www.omadanetworks.com/
Video Center
https://support.omadanetworks.com/video/
Documents
https://support.omadanetworks.com/document/
Product Support
https://support.omadanetworks.com/product/
Technical Support
https://support.omadanetworks.com/contact-support/

Warranty

For details on the warranty period, policy, and procedures, visit <https://support.omadanetworks.com/warranty-services/>.

Support

For technical support, user guides, and other information, please visit <https://support.omadanetworks.com/>, or simply scan the QR code.

